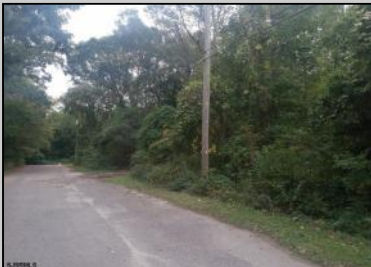




119 Anna St  
Cape May Court House, NJ 08210

Asking \$25,000.00

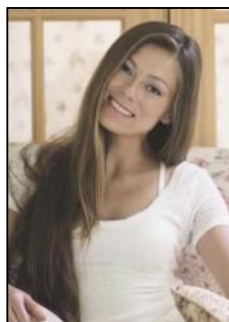


SJSRMLS

#### COMMENTS

Buildable lot being sold with Letter of Interpretation from Dept of Environmental Protection allowing development on existing wetlands. Buyer is advised to due their own due diligence and Buyer will be responsible for U&O. Being sold as a package with 121 E Anna. Contact Listing Agent with questions, interest, etc.

#### PROPERTY DETAILS



Ask for Margarita Kobilianets  
Berger Realty Inc  
1670 Boardwalk, Ocean City  
Call: 609-391-0500  
Email to: [mak@bergerrealty.com](mailto:mak@bergerrealty.com)

