

# Berger Realty

Since 1928

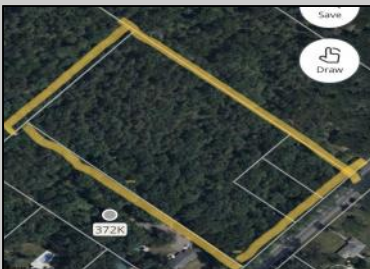


Berger Realty, Inc.  
3160 Asbury Avenue  
Ocean City, NJ 08226  
1-877-237-4371 / 609-399-0076  
info@bergerrealty.com



Route 50 (County Blvd)  
Mays Landing, NJ 08330

Asking \$59,000.00



#### COMMENTS

Lot contains 5.66 acres with 400' of frontage in RD-5 zone. Building can be set 120' from road based on approvals. Great are to spread out and buil the home of your dreams.

#### PROPERTY DETAILS



Ask for James Gray Haenn  
Berger Realty Inc  
3160 Asbury Avenue, Ocean City  
Call: 609-399-0076  
Email to: jgh@bergerrealty.com

