

Berger Realty

Since 1928



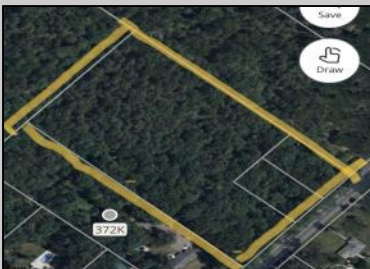
Berger Realty, Inc.
55th & Haven Avenue
Ocean City, NJ 08226
609-399-0040

info@bergerrealty.com



Route 50 (County Blvd)
Mays Landing, NJ 08330

Asking \$59,000.00



COMMENTS

Lot contains 5.66 acres with 400' of frontage in RD-5 zone. Building can be set 120' from road based on approvals. Great are to spread out and buil the home of your dreams.

PROPERTY DETAILS



Ask for Blake Halliday
Berger Realty Inc
109 E 55th St., Ocean City
Call: 609-399-4211
Email to: beh@bergerrealty.com

