



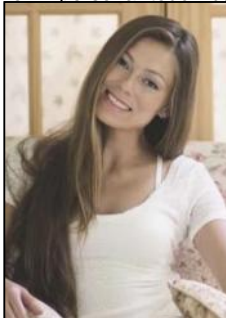
7109 English Creek Ave
Egg Harbor Township, NJ 08234

Asking \$3,800,000.00



COMMENTS

A MUST SEE FOR ALL!!! This ONE OF A KIND LUXURY sanctuary that you didn't even know existed at the Jersey Shore needs to be seen in person to fully appreciate its beauty and uniqueness! Your dreamed about lifestyle awaits down a quiet road with neatly fenced pastures, among soaring oaks and a canal that overlooks your private island. As you make your way down the landscaped driveway of this amazing property, you are greeted by a life-sized sculpture of a steel horse. The subtle elevation changes make the property unique in this area and they create the feel of a national park in the front and a nature preserve in the back of the property. For the horse lovers in the family, this property offers a 7-stall stable, a riding arena with jumps, and a perimeter trail, as well as a stunning new clubhouse with garage, loft and plenty of storage. Trailer your horses to nearby Brigantine beach and ride with a permit during the off season or to plenty of local riding trails in the area. When you're done riding, relax on the dock under the tall trees. Launch your paddle-board, canoe or kayak on the canal. Have a cool drink in the screened in gazebo. There's literally something for everyone. This natural oasis resides just 15 minutes from the world famous beaches and boardwalk of Ocean City, but it's also so much more. Misty Acres Ranch represents a unique opportunity to own 8.4 acres of a rural paradise close to beautiful beaches, several renowned golf courses, shopping, dining and Atlantic City nightlife. Located just minutes to and from the AC Expressway it's easy to get to from anywhere on the East Coast and the AC International Airport is less than 10 miles away. You can put your own personal touch by designing your dream home or using our shovel-ready plans, including



Ask for Margarita Koubanets
Berger Realty Inc
1670 Boardwalk Ocean City
NJ 08226
Call 609-391-0500
Email to mark@bergerrealty.com



PROPERTY DETAILS