



2330 New Road
Northfield, NJ 08225

Asking \$595,000.00



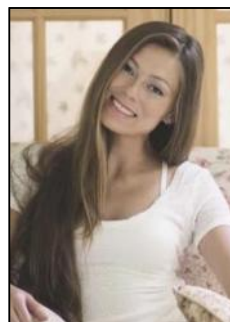
SJSRMLS

COMMENTS

PRIME 3600+ SQ FT OFFICE BUILDING WITH 1800+ SQ FT BASEMENT IN GREAT NORTHFIELD LOCATION. EACH 1800+ SQ FT FLOOR INCLUDES RECEPTION AREA, CONFERENCE ROOM AND 4 OFFICES. PROPERTY IS LEASED TO BANK ON FIRST LEVEL AND CASINO COMPANY ON SECOND LEVEL.

PROPERTY DETAILS

OutsideFeatures Sign	ParkingGarage 11 or More Spaces	Basement 6 Ft. or More Room Full	Heating Head Forced Air Gas-Natural
Cooling Central	HotWater Gas	Water Public	Sewer Public Sewer



Ask for Margarita Kobilianets
Berger Realty Inc
1670 Boardwalk, Ocean City
Call: 609-391-0500
Email to: mak@bergerrealty.com

