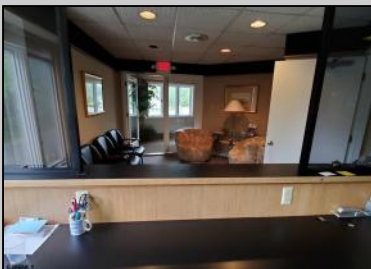




2330 New Road
Northfield, NJ 08225

Asking \$595,000.00



SJSRMLS

COMMENTS

PRIME 3600+ SQ FT OFFICE BUILDING WITH 1800+ SQ FT BASEMENT IN GREAT NORTHFIELD LOCATION. EACH 1800+ SQ FT FLOOR INCLUDES RECEPTION AREA, CONFERENCE ROOM AND 4 OFFICES. PROPERTY IS LEASED TO BANK ON FIRST LEVEL AND CASINO COMPANY ON SECOND LEVEL.

PROPERTY DETAILS

OutsideFeatures	ParkingGarage	Basement	Heating
Sign	11 or More Spaces	6 Ft. or More Room Full	Head Forced Air Gas-Natural
Cooling Central	HotWater Gas	Water Public	Sewer Public Sewer



Ask for Laryn Crisci
Berger Realty Inc
1670 Boardwalk, Ocean City
Call: 609-391-0500
Email to: lrc@bergerrealty.com

