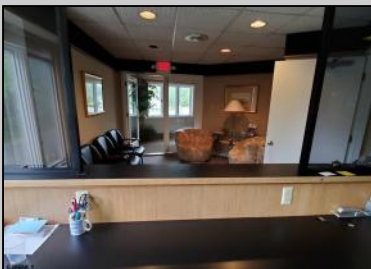




2330 New Road  
Northfield, NJ 08225

Asking \$595,000.00



SJSRMLS

### COMMENTS

PRIME 3600+ SQ FT OFFICE BUILDING WITH 1800+ SQ FT BASEMENT IN GREAT NORTHFIELD LOCATION. EACH 1800+ SQ FT FLOOR INCLUDES RECEPTION AREA, CONFERENCE ROOM AND 4 OFFICES. PROPERTY IS LEASED TO BANK ON FIRST LEVEL AND CASINO COMPANY ON SECOND LEVEL. 2.5% SELLER CONCESSION TO BUYER.

### PROPERTY DETAILS

OutsideFeatures	ParkingGarage	Basement	Heating
Sign	11 or More Spaces	6 Ft. or More Room Full	Head Forced Air Gas-Natural
Cooling Central	HotWater Gas	Water Public	Sewer Public Sewer



Ask for Lori McCloskey  
Berger Realty Inc  
109 E 55th St., Ocean City  
Call: 609-399-4211  
Email to: lam@bergerrealty.com

