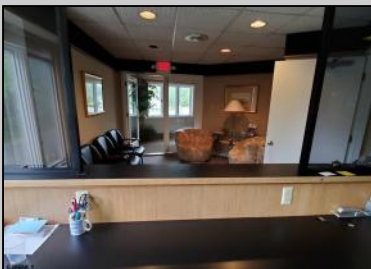




2330 New Road
Northfield, NJ 08225

Asking \$595,000.00



SJSRMLS

COMMENTS

PRIME 3600+ SQ FT OFFICE BUILDING WITH 1800+ SQ FT BASEMENT IN GREAT NORTHFIELD LOCATION. EACH 1800+ SQ FT FLOOR INCLUDES RECEPTION AREA, CONFERENCE ROOM AND 4 OFFICES. PROPERTY IS LEASED TO BANK ON FIRST LEVEL AND CASINO COMPANY ON SECOND LEVEL.

PROPERTY DETAILS

| | | | |
|-----------------|-------------------|-------------------------|-----------------------------|
| OutsideFeatures | ParkingGarage | Basement | Heating |
| Sign | 11 or More Spaces | 6 Ft. or More Room Full | Head Forced Air Gas-Natural |
| Cooling Central | HotWater Gas | Water Public | Sewer Public Sewer |



Ask for Brian Kolmer
Berger Realty Inc
109 E 55th St., Ocean City
Call: 609-399-4211
Email to: bk@bergerrealty.com

