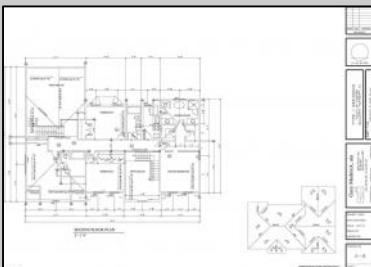
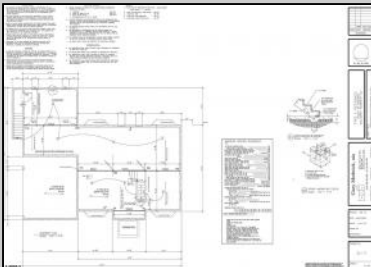
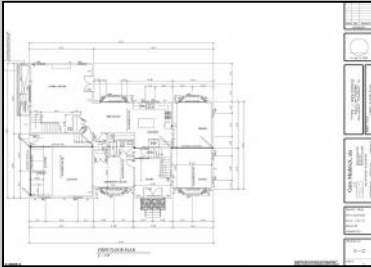




116/6215 Delaware Avenue/Mill Rd
 Egg Harbor Township, NJ 08234

Asking \$669,999.00



S.JSRMLS

COMMENTS

Discover Elegance and Modern Living in Egg Harbor Township's Premier Development! Excitement is in the air as construction is well underway for Egg Harbor Township's newest and most captivating development. Choose from two distinctive models, each offering 4+bedrooms for spacious and luxurious living. All homes feature vinyl flooring, a2-car garage, open floor plans, and ready-to-finish walkout basements with superior walls. Experience culinary excellence with stainless steel appliances and granite countertops throughout. Act swiftly to secure your place in this thriving community. This is your chance to be a part of a flourishing community where modernity meets comfort.

PROPERTY DETAILS

| | | | |
|-------------------------|------------------------------|---|------------------------|
| Exterior See Remarks | ParkingGarage See Remarks | AppliancesIncluded Dishwasher Dryer Gas Stove Microwave Refrigerator Washer | Heating Gas-Natural |
| Cooling Central | Water Public | Sewer Public Sewer | |

GROSS AREAS TOM 2

| | |
|--------------------------|----------|
| FIRST FLOOR LIVING AREA | 1,779 SF |
| SECOND FLOOR LIVING AREA | 1,522 SF |
| BASEMENT AREA | 1,700 SF |
| GARAGE AREA | 460 SF |



Ask for Matthew Bader
 Berger Realty Inc
 3160 Asbury Avenue, Ocean City
 Call: 609-399-0076
 Email to: mhb@bergerrealty.com
 http://www.BADERCOLLINS.com

