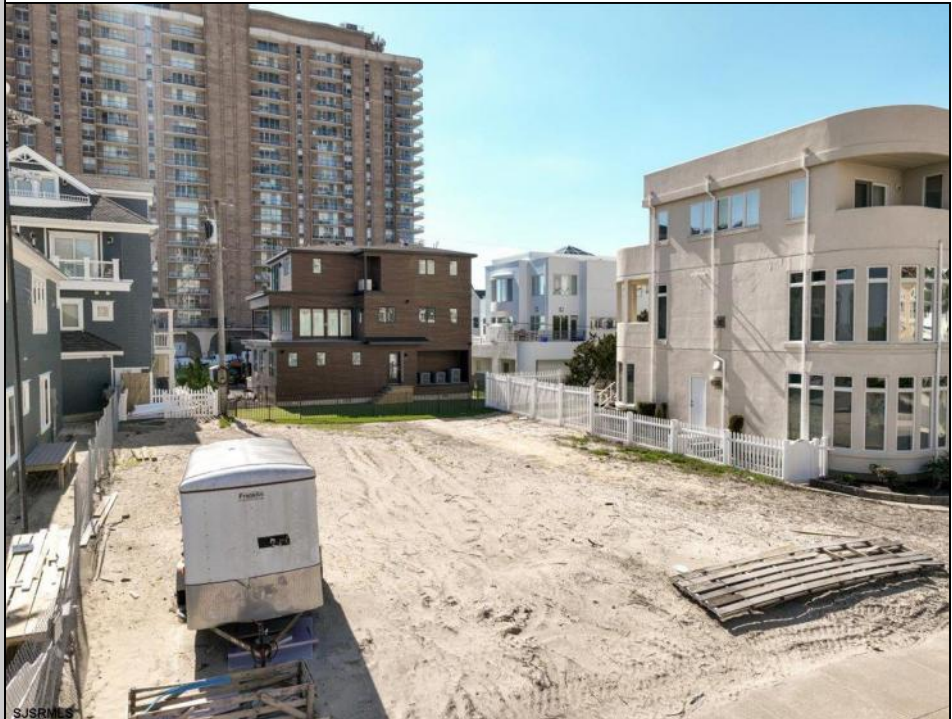




130 Montgomery
Atlantic City, NJ 08401

Asking \$1,100,000.00



COMMENTS

BUILD YOUR FUTURE BEACH HOME ON THIS 5,100 SQFT LOT that is ideally situated in Lower Chelsea and merely one block away from Ventnor!! Spanning an impressive 60x85 in size, this parcel offers ample space for a 4500+ SF home. Situated merely steps away from the beach, it boasts breathtaking views that extend northward, encompassing the Boardwalk and the beautiful beach area. The current owner has taken the initiative to commission plans for a stunning house, thoughtfully designed by Craig Dothe. These plans include both indoor and outdoor pools and have received CAFRA approval and the property is free from any oil tank presence. Don't hesitate to seize this incredible opportunity—reach out and call us today!

PROPERTY DETAILS



Ask for Lauren Greiner
Berger Realty Inc
3160 Asbury Avenue, Ocean City
Call: 609-399-0076
Email to: lmg@bergerrealty.com

