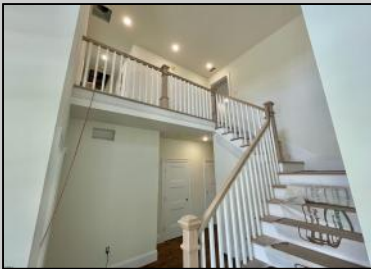




903 Maple Ave  
 Linwood, NJ 08221

Asking \$1,199,000.00



### COMMENTS

BRAND NEW CUSTOM CONSTRUCTED 3,400 SQ.FT FAMILY 2-story in Heart of Linwood. Centrally located on bike path w/oversized lot suitable for pool & much more. Only steps to Ballpark and straight shot to all 3 Linwood Award winning public schools. 5 bdrm, 4.5 bath, 9 ft. basement, 2-car garage and an elegant flowing floorplan make this among finest new construction ever offered in Linwood. Includes 3 private ensuite bedrooms (ONE ON FIRST FLOOR!). Large rear covered porch flowing from multiple room access, and balcony off MBR Suite Both enjoy cheerful SouthWest exposure!! Design, finishes, amenities and quality of materials and construction make this a value difficult to duplicate...and a location that suits its historically refined architecture!

### PROPERTY DETAILS

Exterior Vinyl	OutsideFeatures Curbs Deck Porch Sidewalks Sprinkler System	ParkingGarage Attached Garage Two Car	OtherRooms Breakfast Nook Dining Room Eat In Kitchen Great Room In-Law Quarters Laundry/Utility Room Pantry Primary BR on 1st floor Storage Attic
----------------	--	---	--



Ask for Tom Melchionni  
 Berger Realty Inc.  
 3160 Asbury Avenue Ocean City  
 Call 609-399-0076  
 Email: tom@bergerrealty.com  
 Appliances Included  
 Dishwasher  
 Disposal  
 Gas Stove  
 Microwave  
 Refrigerator

HotWater Gas  
 Water Public

Heating



Public Sewer

Multi-Zoned