

Berger Realty

Since 1928

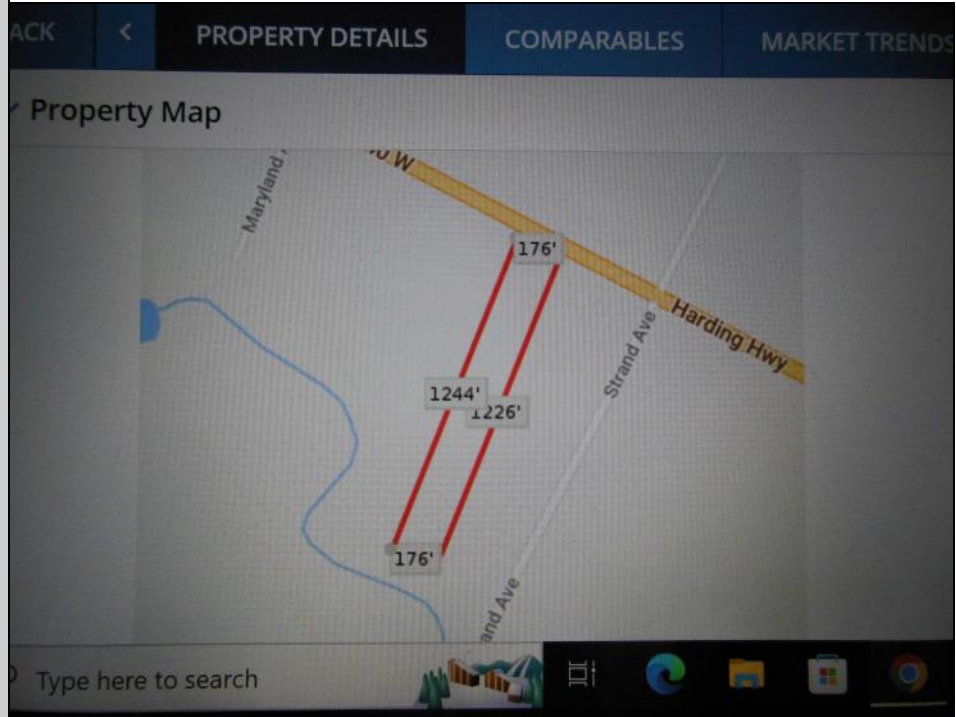


Berger Realty, Inc
1330 Bay Avenue
Ocean City, NJ 08226
609-391-1330/609-391-1300
info@bergerrealty.com



Harding
Mays Landing, NJ 08234

Asking \$25,000.00



COMMENTS

5.09 acres on Harding Hwy. 176' road frontage. Any questions should be answered by the buyers own due diligence..

PROPERTY DETAILS

Ask for Louis Paone
Berger Realty Inc
1330 Bay Avenue, Ocean City
Call: 609-391-1330
Email to: lsp@bergerrealty.com

