

Berger Realty

Since 1928

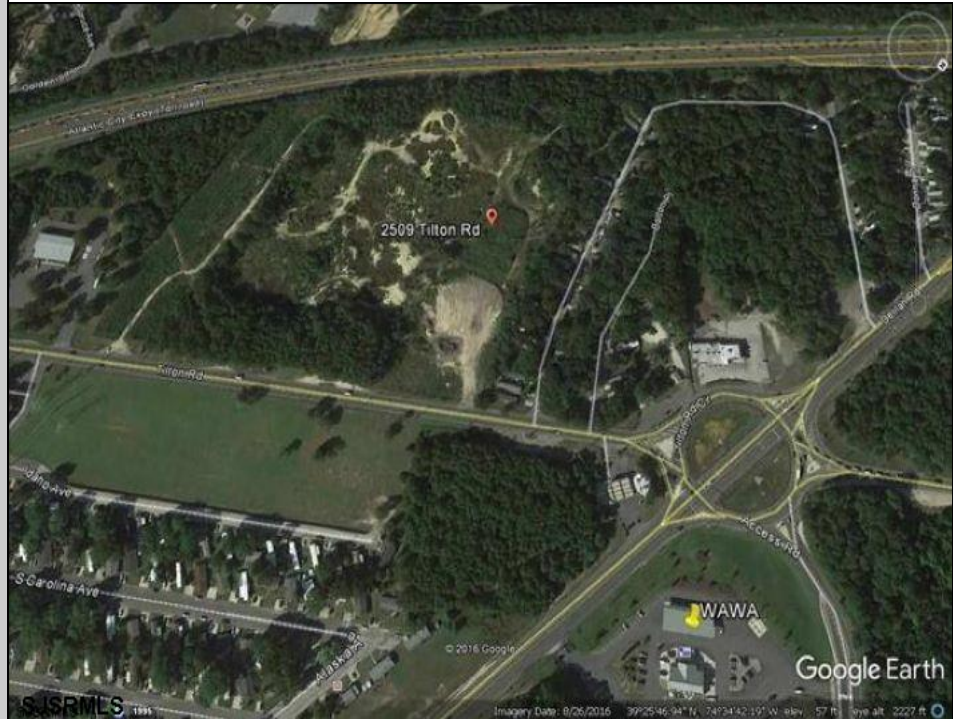


Berger Realty, Inc.
3160 Asbury Avenue
Ocean City, NJ 08226
1-877-237-4371 / 609-399-0076
info@bergerrealty.com



2509 Tilton Rd
Egg Harbor Township, NJ 08234

Asking \$699,000.00



COMMENTS

PRIME USE! Motel, hotel, retail, manufacturing, fabrication, warehouse, cannabis, storage, medical, restaurant, laboratory, gaming, distribution, banking, recreation and education facility uses. Owner retiring and wants this sold. Bring all offers!

PROPERTY DETAILS



Ask for Tara Crusser-Moss
Berger Realty Inc
3160 Asbury Avenue, Ocean City
Call: 609-399-0076
Email to: tcm@bergerrealty.com

