



**408 BETHEL ROAD**  
**Somers Point, NJ 08244**

**Asking \$149,900.00**



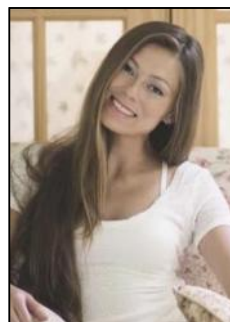
SJSRMLS

### COMMENTS

AVAILABLE IMMEDIATELY IN POINT COMMONS! GREAT 1920 SQ FT 2ND FLOOR LOCATION FOR PROFESSIONAL OR MEDICAL OFFICES IS READY TO OCCUPY WITH 2 WAITING ROOMS, CONFERENCE ROOM, 4 OFFICE OR EXAM ROOMS, KITCHEN, 2 RESTROOMS, ELEVATOR, 2 STAIRCASES AND MORE! OUTSTANDING CENTRAL SOMERS POINT LOCATION MINUTES FROM PRIME MAINLAND COMMUNITIES AND SHORE TOWNS!

### PROPERTY DETAILS

Exterior Frame/Wood	OutsideFeatures Sign	ParkingGarage 11 or More Spaces	InteriorFeatures Elevator Pass Restroom Storage
Heating Electric	Cooling Central	HotWater Electric	Water Public
Sewer Public Sewer			



Ask for Margarita Kobilianets  
Berger Realty Inc  
1670 Boardwalk, Ocean City  
Call: 609-391-0500  
Email to: [mak@bergerrealty.com](mailto:mak@bergerrealty.com)

