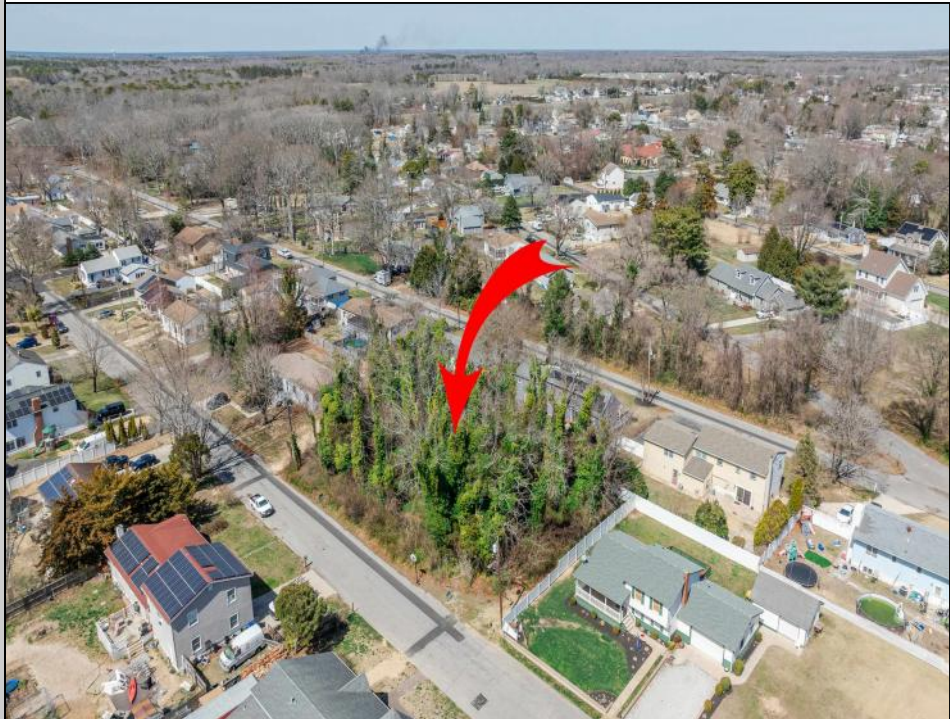




937 B Myrna
Erma, NJ 08204

Asking \$168,000.00



COMMENTS

Approved buildable lot available in a great central location in Erma. The neighborhood is city sewer and well. Great opportunity to build your dream home or invest in Lower Township. Lot 83.02 directly next-door is also available. Address and taxes are to be determined.

PROPERTY DETAILS



Ask for Joan S. Spencer
Berger Realty Inc
1330 Bay Avenue, Ocean City
Call: 609-391-1330
Email to: jss@bergerrealty.com

