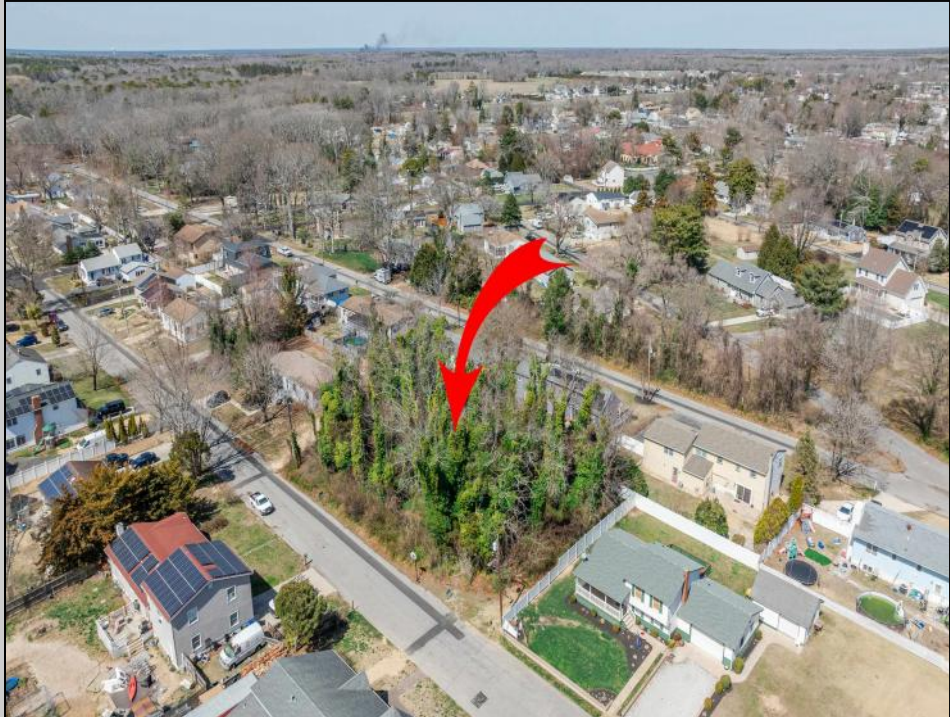




937 B Myrna
Erma, NJ 08204

Asking \$168,000.00



COMMENTS

Approved buildable lot available in a great central location in Erma. The neighborhood is city sewer and well. Great opportunity to build your dream home or invest in Lower Township. Lot 83.02 directly next-door is also available. Address and taxes are to be determined.

PROPERTY DETAILS



Ask for Ben Duncan
Berger Realty Inc
3160 Asbury Avenue, Ocean City
Call: 609-399-0076
Email to: bmd@bergerrealty.com

