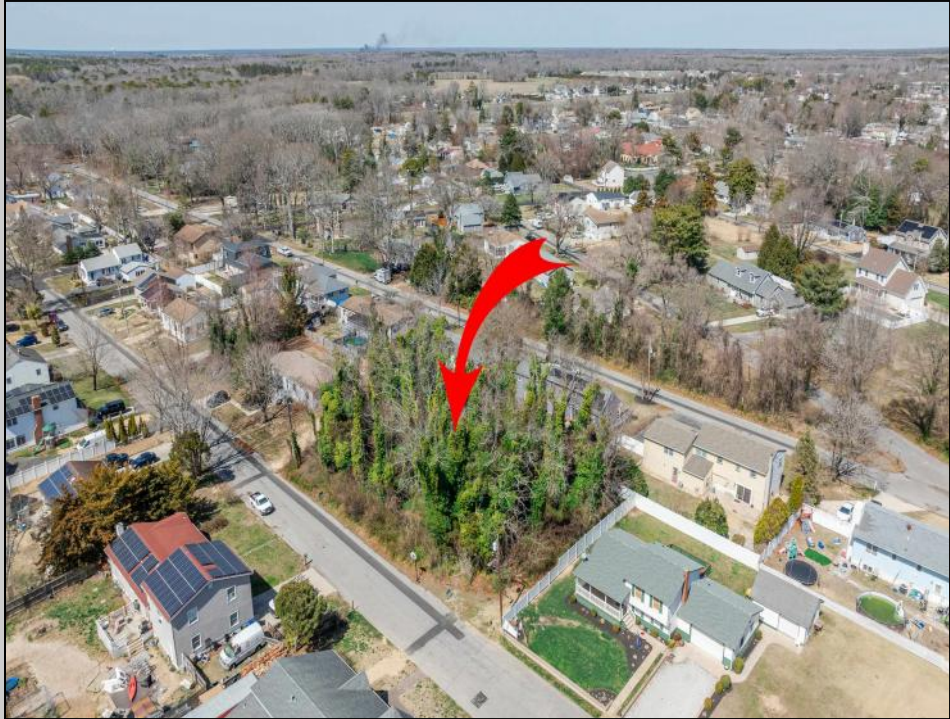




937 A Myrna
Erma, NJ 08204

Asking \$168,000.00



COMMENTS

Approved buildable lot available in a great central location in Erma. The neighborhood is city sewer and well. Great opportunity to build your dream home or invest in Lower Township. Lot 84 directly next-door is also available. Address and taxes are to be determined.

PROPERTY DETAILS



Ask for Veronica "Ronni" Vetro
Berger Realty Inc
3160 Asbury Avenue, Ocean City
Call: 609-399-0076
Email to: vrv@bergerrealty.com

