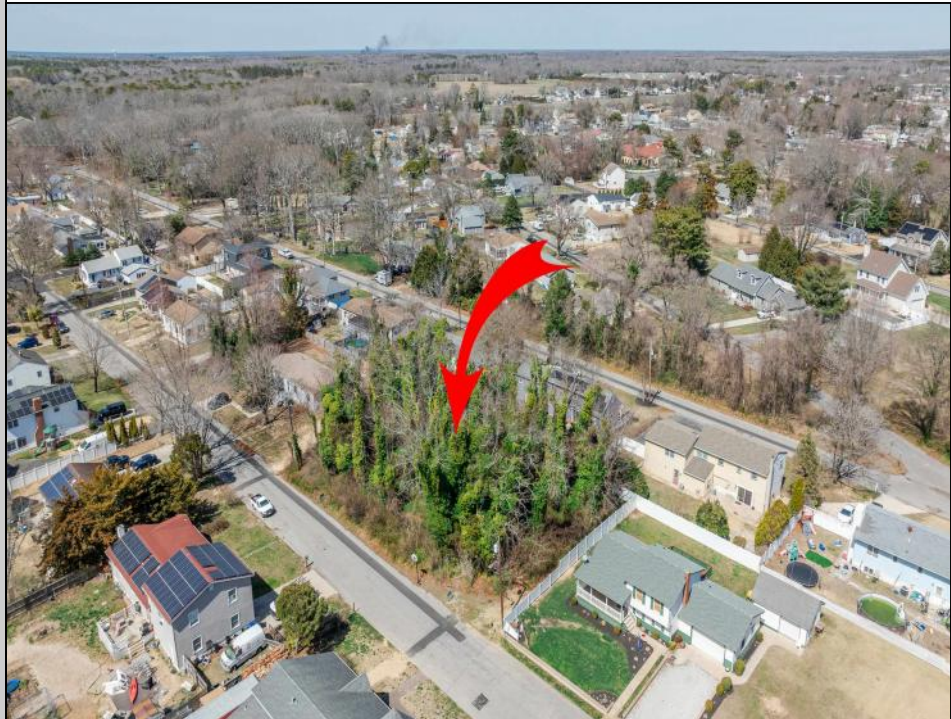




937 A Myrna  
Erma, NJ 08204

Asking \$168,000.00



### COMMENTS

Approved buildable lot available in a great central location in Erma. The neighborhood is city sewer and well. Great opportunity to build your dream home or invest in Lower Township. Lot 84 directly next-door is also available. Address and taxes are to be determined.

### PROPERTY DETAILS



Ask for Ken Sedberry  
Berger Realty Inc  
3160 Asbury Avenue, Ocean City  
Call: 609-399-0076  
Email to: kas@bergerrealty.com

