

Berger Realty

Since 1928



Berger Realty, Inc.
3160 Asbury Avenue
Ocean City, NJ 08226
1-877-237-4371 / 609-399-0076
info@bergerrealty.com



2778 Dune
Avalon, NJ 08202

Asking \$1,495,000.00

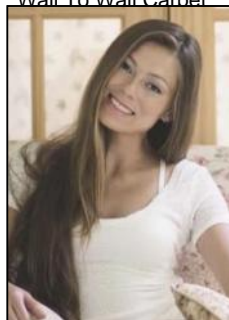


COMMENTS

BEAUTIFULLY RENOVATED CONDO IN 2022 SITUATED IN A VERY CONVENIENT CENTER TOWN LOCATION ONLY THREE BLOCKS TO THE BEACH. Second floor unit offering three bedrooms and two full baths with 1,425 square feet of living space. The extensive renovations completed in 2022 included new engineered wide plank floors, new kitchen cabinets, stunning Super White quartz countertops, new stainless steel appliances, ice maker, beverage fridge, custom tiled baths, new carpets, custom built ins, attractive trim package, fresh paint, custom window treatments and new A/C compressor. There are two, private expansive sun decks on the west side of the home and east side which has its own automated awning. The front entrance opens to a beautiful vaulted great room with wide plank floors, custom built in, dining banquet seating, kitchen with huge center island with plenty of seating, primary bedroom with new custom bath, two additional bedrooms, new hall bath and laundry. The decorator furnishings are fabulous with many Serena Lily pieces. Home sold beautifully furnished and decorated. The property is situated on the corner of 28th Street and Dune Drive. The 28th Street beach is guarded and is also a raft beach. For the surfers, 30th Street is only two blocks away.

PROPERTY DETAILS

UnitFeatures	ParkingGarage	OtherRooms	AppliancesIncluded
Kitchen Island	1 Car	Kitchen	Range
Hardwood Floors	Assigned Parking	Eat In Kitchen	Oven
Wall To Wall Carpet		Dining Area	Microwave Oven
		Laundry/Utility Room	Refrigerator
			Washer
			Dryer
			Dishwasher
			Stainless Steel Appliances
			Central Air
			Ceiling Fan



Ask for Margarita Kobilianets
Berger Realty Inc
3160 Asbury Avenue, Ocean City
Call: 609-399-0076

Email to: mak@bergerrealty.com

Heating
Gas Natural
Forced Air

Cooling
Central Air
Ceiling Fan



Water
City

Sewer
City