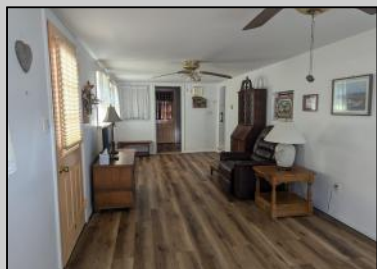


# Berger Realty

Since 1928



Berger Realty, Inc.  
3160 Asbury Avenue  
Ocean City, NJ 08226  
1-877-237-4371 / 609-399-0076  
info@bergerrealty.com



298 Poplar  
Woodbine, NJ 08270

Asking \$112,500.00



## COMMENTS

Explore this exceptional perimeter unit nestled against the woods at the park's cul-de-sac! This home boasts two spacious bedrooms with extensive built-in storage, fresh vinyl flooring, a full-size range, and a microwave installed above. The walk-in shower is a noteworthy addition. Relish the screened porch, the accessible ramp, an external storage shed, and the highlight—a backyard bordering the forest, featuring a clear space ideal for social events and barbecues. Offered at an attractive price point! The park operates all year, yet owners are required to leave for two weeks annually. The HOA fee is \$1,000 yearly, and the land is yours!

## PROPERTY DETAILS

Exterior	OutsideFeatures	ParkingGarage	OtherRooms
Vinyl	Screened Porch	2 Car	Living Room
	Storage Building	Stone Driveway	Kitchen
	See Remarks		Dining Area
			Pantry
			Laundry/Utility Room
			Florida Room

InteriorFeatures	AppliancesIncluded	AlsoIncluded	Heating
Cathedral Ceilings	Range	Blinds	Electric
Smoke/Fire Alarm	Oven	Partial Furniture	
	Microwave Oven		
	Refrigerator		
	Storage		
	Water		
	Electric		
	Private		



Ask for Steven Orner  
Berger Realty Inc  
3160 Asbury Avenue, Ocean City  
Call: 609-399-0076  
Email to: slo@bergerrealty.com

