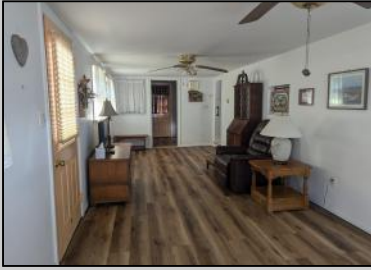




**298 Poplar
Woodbine, NJ 08270**

Asking \$112,500.00



COMMENTS

Explore this exceptional perimeter unit nestled against the woods at the park's cul-de-sac! This home boasts two spacious bedrooms with extensive built-in storage, fresh vinyl flooring, a full-size range, and a microwave installed above. The walk-in shower is a noteworthy addition. Relish the screened porch, the accessible ramp, an external storage shed, and the highlight—a backyard bordering the forest, featuring a clear space ideal for social events and barbecues. Offered at an attractive price point! The park operates all year, yet owners are required to leave for two weeks annually. The HOA fee is \$1,000 yearly, and the land is yours!

PROPERTY DETAILS

Exterior	OutsideFeatures	ParkingGarage	OtherRooms
Vinyl	Screened Porch Storage Building See Remarks	2 Car Stone Driveway	Living Room Kitchen Dining Area Pantry Laundry/Utility Room Florida Room

InteriorFeatures	AppliancesIncluded	AlsoIncluded	Heating
Cathedral Ceilings Smoke/Fire Alarm	Range Oven Microwave Oven	Blinds Partial Furniture	Electric



Ask for **Matthew Galownia**
Berger Realty Inc
1670 Boardwalk, Ocean City
Hot Water
Call: 609-391-0500
Electric Private
Email to: gmj@bergerrealty.com

