



610 Beach
Cape May, NJ 08204

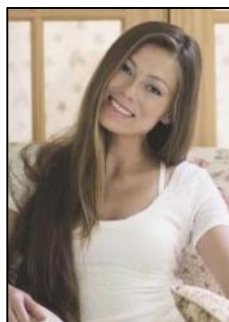
Asking \$1,000,000.00



COMMENTS

Rare opportunity to own 8.17 acres of prime beach property in Cape May! Nestled between city lots, this expansive parcel offers an unparalleled location along the iconic shoreline. A unique offering, this property is subject to provisions contained in an easement recorded with the deed. The seller makes no representations regarding permitted uses, and buyers are encouraged to conduct their own due diligence with the municipality regarding zoning and land use regulations. Additionally, the City of Cape May holds the first right of refusal in an arms-length transaction. Don't miss your chance to explore the potential of this exceptional location! Contact us today for more details.

PROPERTY DETAILS



Ask for Margarita Kobilianets
Berger Realty Inc
3160 Asbury Avenue, Ocean City
Call: 609-399-0076
Email to: mak@bergerrealty.com

