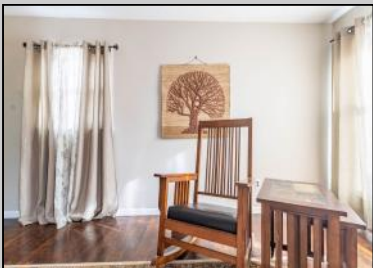


**3604 Bayshore
North Cape May, NJ 08204**

Asking \$525,000.00



COMMENTS

Welcome to 3604 Bayshore Rd in North Cape May! This oversized 2-bedroom, 2-bath rancher is perfectly situated just a short bike ride from the serene Delaware Bay and the beautiful beaches of Cape May. Sitting on nearly a quarter-acre lot, this home offers both space and convenience, located near the heart of North Cape May. Upon entering, you're welcomed into a cozy living room, perfect for relaxing, reading, or decompressing after a long day. Towards the back of the home, you'll find an impressive great room with cathedral ceilings, seamlessly opening into the kitchen—an entertainer's dream! The kitchen features an island bar top and a charming breakfast nook area, making it a warm and inviting space for gatherings and everyday living. This home boasts numerous recent upgrades, including a newer roof, new HVAC system, new tankless gas hot water heater, sump pump, and dehumidifier under the crawl space. Stay warm and cozy in the living room with a Kozy-World ventless gas heater. Outdoor storage is plentiful with two spacious sheds, and the concrete driveway comfortably fits four large vehicles. Whether you're looking for a full-time residence, a vacation getaway, or an investment opportunity, this home is ready to be enjoyed!

PROPERTY DETAILS

Exterior Vinyl	OutsideFeatures Deck Fenced Yard	ParkingGarage Concrete Driveway 4 car parking	OtherRooms Living Room Dining Room Kitchen Breakfast Nook Laundry/Utility Room Great Room
InteriorFeatures Cathedral Ceilings Fireplace- Gas Wood Flooring Vinyl Flooring Kitchen Island	AppliancesIncluded Range Oven Microwave Oven Refrigerator Washer Dryer Dishwasher Disposal	AlsoIncluded Drapes Curtains Shades	Basement Crawl Space
Heating Gas Natural	Cooling Central Air Condition	HotWater Gas- Natural	Water City

Berger Realty

• Since 1928 •



Berger Realty, Inc.
3160 Asbury Avenue
Ocean City, NJ 08226
1-877-237-4371 / 609-399-0076
✉ info@bergerrealty.com



Sewer
City

