

Berger Realty

Since 1928



Berger Realty, Inc.
3160 Asbury Avenue
Ocean City, NJ 08226
1-877-237-4371 / 609-399-0076
info@bergerrealty.com



1207 14th
Dorothy, NJ 08317

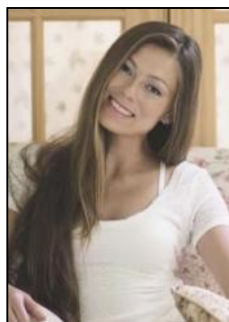
Asking \$135,000.00



COMMENTS

Escape to the serene beauty of this 5-acre property in the heart of Dorothy! With the driveway & one acre already cleared awaiting your vision, this exceptional lot offers endless possibilities for building your dream home. With its Pinelands approval, this lot has had soil boring conducted so you can rest assured that this property meets the highest environmental standards. Just 30 minutes to the pristine beaches of Ocean City, you'll enjoy the best of both worlds - peaceful private living and easy access to the shore. Imagine waking up each morning to an undisturbed woodland setting, surrounded by nature's beauty and serenity. Property is subject to a deed restriction limiting development to a maximum of a (1) one acre building site. Don't miss your chance to own a piece of paradise!

PROPERTY DETAILS



Ask for Margarita Kobilianets
Berger Realty Inc
3160 Asbury Avenue, Ocean City
Call: 609-399-0076
Email to: mak@bergerrealty.com

