

Berger Realty

Since 1928



Berger Realty, Inc.
3160 Asbury Avenue
Ocean City, NJ 08226
1-877-237-4371 / 609-399-0076
info@bergerrealty.com



3941 Bayshore
Lower Township, NJ 08204

Asking \$1,650,000.00

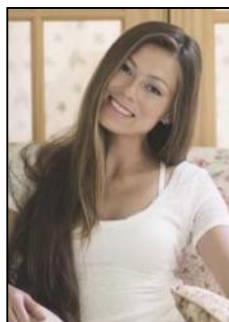


Property dimensions and locations are approximate, not exact.
Deemed reliable but not guaranteed.
For advertising purposes only.

COMMENTS

RARE GEM OF A PRISTINE LUXURY RESIDENTIAL LOCATION DIRECTLY ON THE CAPE MAY CANAL IN A SECLUDED ENVIRONMENT. This recently approved residential home site fronts on the canal with water views and potential access to the waterway. You truly have a new canvas to design, construct, and enjoy your own private estate while being surrounded by the canal, mature foliage, and wildlife in a quiet setting. It is hard to believe that you are still less than 10 minutes away from the beaches, dining, shopping, recreational fishing, and attractions of Cape May.

PROPERTY DETAILS



Ask for Margarita Kobilianets
Berger Realty Inc
3160 Asbury Avenue, Ocean City
Call: 609-399-0076
Email to: mak@bergerrealty.com

