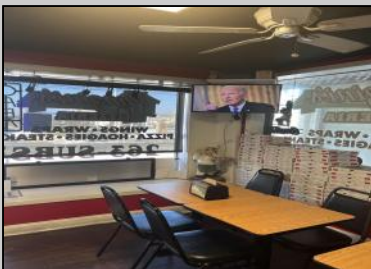




4105 Landis
Sea Isle City, NJ 08243

Asking \$250,000.00



COMMENTS

Thriving Pizza Shop Opportunity in Prime Sea Isle Location! The sale includes the business only, with the requirement to sign a lease with the landlord for the building. Current rent is \$2200/month. Fully equipped and ready for continued success, the shop features a new air conditioner, bathroom, hood, and tankless water heater, along with three bain-maries (3 years old), three freezers (3 years old), two recently serviced pizza ovens, a deli slicer, and a 60-quart dough machine capable of making 60 dough balls at a time. There's even space for indoor seating, and possible seating outside. This is your chance to own a thriving business in a prime location in the center of town with plenty of growth potential by extending hours and operating 7 days a week. Don't miss this rare opportunity to take over a beloved establishment in one of South Jersey's hottest beach towns!

PROPERTY DETAILS

Exterior	OutsideFeatures	ParkingGarage	OtherRooms
Brick Face	Restrooms Sign Security Light/System Other (See Remarks)	None	Public Restroom
InteriorFeatures	Heating	Cooling	HotWater
220 Volt Electricity Fire Sprinkler System Restroom Security System Smoke/Fire Alarm Storage	Gas Natural	Central Conditioning Ceiling Fan	Air Gas
Water	Sewer		
Public	Public		

