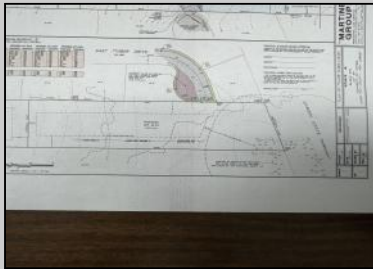
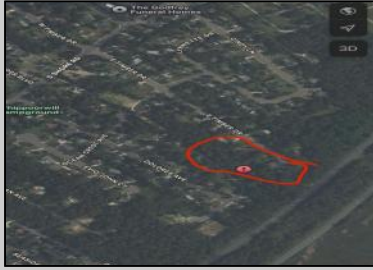


Berger Realty

Since 1928

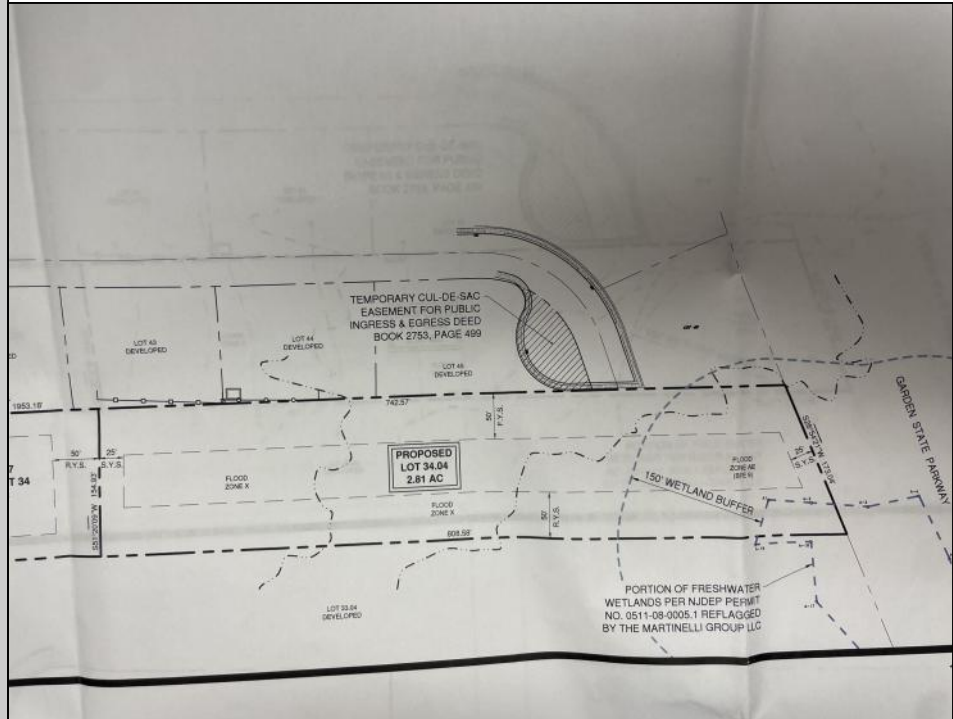


Berger Realty, Inc.
3160 Asbury Avenue
Ocean City, NJ 08226
1-877-237-4371 / 609-399-0076
info@bergerrealty.com



24 Timber
Marmora, NJ 08223

Asking \$285,000.00



COMMENTS

OVER 2.5 ACRES! Rare opportunity to own a buildable lot in the highly sought after Marmora section of Upper Township. Total of 2.83 acres. Upper Township and OCHS school district. Cul-De-Sac location, and only 5 minutes to Ocean City beaches and boardwalk.

PROPERTY DETAILS



Ask for Tanya Pinkerton
Berger Realty Inc
3160 Asbury Avenue, Ocean City
Call: 609-399-0076
Email to: tp@bergerrealty.com

