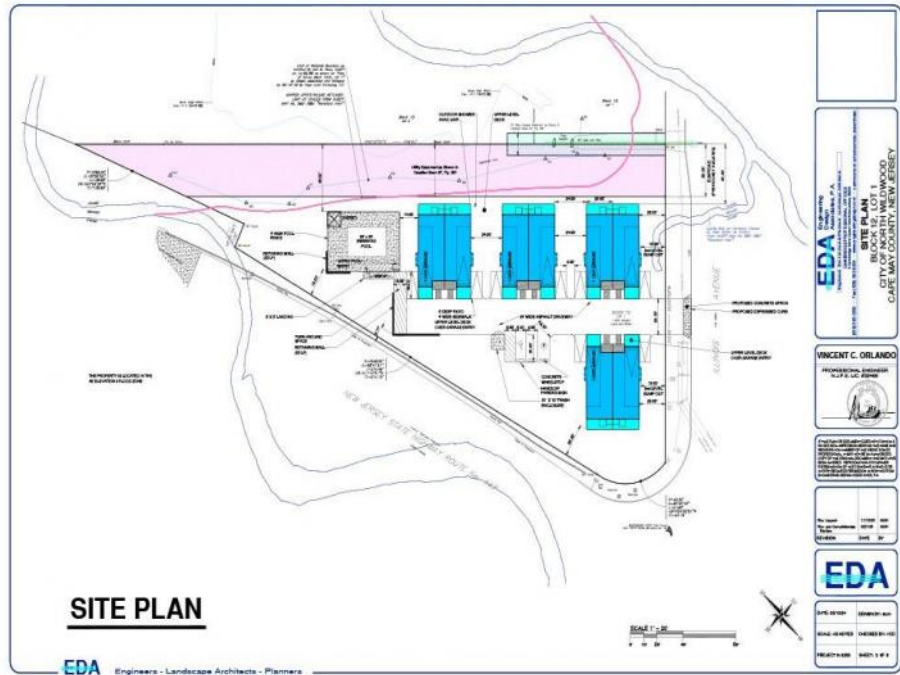




800 Spruce  
North Wildwood, NJ 08260

Asking \$2,500,000.00



**COMMENTS**

Fully approved for 8 - 2400 +- sq. ft townhomes. Development is approved for large pool facility and plenty of parking. Water views from all angles and perfectly located in Anglesea with easy access to and from our island. See concept plan attached. Contact listing broker for all details

**PROPERTY DETAILS**



Ask for Carole Lelli  
Berger Realty Inc  
109 E 55th St., Ocean City  
Call: 609-399-4211  
Email to: cll@bergerrealty.com

