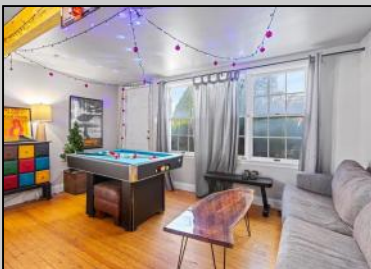




**300 Wesley
 Ocean City, NJ 08266**

Asking \$1,699,000.00



COMMENTS

Unique house with guest suite. LARGE CORNER LOT 50 X 120 with over 3000 sq ft of useable yard space. BUILD A DUPLEX OR HUGEHOUSE! In the quiet north end of Ocean City that is less crowded and more relaxed compared to the central part of Ocean City. This makes it a great spot for families and people looking for a more peaceful beach experience. The North End has wide, clean beaches that are less crowded than those near the boardwalk, making it an ideal place for beachgoers who prefer a more tranquil setting.

PROPERTY DETAILS

OutsideFeatures	ParkingGarage	OtherRooms	Heating
Patio	Garage	Living Room	Baseboard
Porch	3 Car	Dining Room	
Cable TV		Kitchen	
Sidewalks		Den/TV Room	
		Great Room	
		Storage Space	
Cooling	HotWater	Water	Sewer
Ceiling Fan	Electric	Public	Public



Ask for Tanya Pinkerton
 Berger Realty Inc
 3160 Asbury Avenue, Ocean City
 Call: 609-399-0076
 Email to: tp@bergerrealty.com

