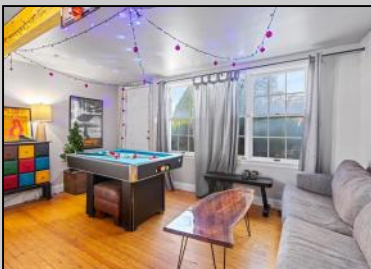




300 Wesley  
Ocean City, NJ 08266

Asking \$1,699,000.00



### COMMENTS

Unique house with guest suite. LARGE CORNER LOT 50 X 120 with over 3000 sq ft of useable yard space. BUILD A DUPLEX OR HUGEHOUSE! In the quiet north end of Ocean City that is less crowded and more relaxed compared to the central part of Ocean City. This makes it a great spot for families and people looking for a more peaceful beach experience. The North End has wide, clean beaches that are less crowded than those near the boardwalk, making it an ideal place for beachgoers who prefer a more tranquil setting.

### PROPERTY DETAILS

|                 |               |               |           |
|-----------------|---------------|---------------|-----------|
| OutsideFeatures | ParkingGarage | OtherRooms    | Heating   |
| Patio           | Garage        | Living Room   | Baseboard |
| Porch           | 3 Car         | Dining Room   |           |
| Cable TV        |               | Kitchen       |           |
| Sidewalks       |               | Den/TV Room   |           |
|                 |               | Great Room    |           |
|                 |               | Storage Space |           |
| Cooling         | HotWater      | Water         | Sewer     |
| Ceiling Fan     | Electric      | Public        | Public    |

SALE

**BADER-COLLINS**  
ASSOCIATES  
"THE TEAM YOU CAN TRUST"

**BERGER**  
REALTY  
3160 Asbury Avenue

BADERCOLLINS.COM

Ask for Bader - Collins Associates  
Berger Realty Inc  
3160 Asbury Avenue, Ocean City  
Call: 609-399-0076  
Email to: bca@bergerrealty.com  
http://www.BADERCOLLINS.com

