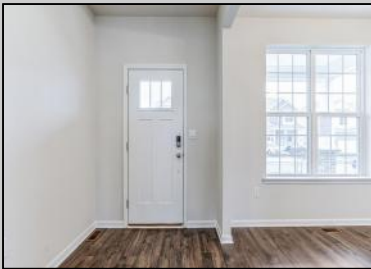




1113 Route 9 S
Palermo, NJ 08223

Asking \$749,990.00

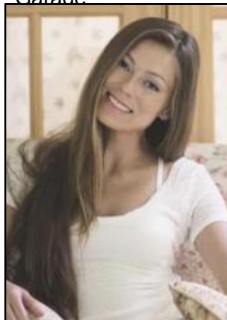


COMMENTS

NEW CONSTRUCTION UNDERWAY - Please call for appointment to tour! Nestled on an oversized wooded lot in the highly sought after Upper Township School District and in close proximity to the stunning beaches of Ocean City. The Hadley is a stunning new construction home plan featuring 2,628 square feet of living space, 4 bedrooms, 3 bathrooms, an upstairs loft area and a 2-car garage with side entry. Full basement included! With a roomy floor plan and flex areas to be used as you choose, the Hadley is just as inviting as it is functional! As you enter the home into the foyer, you're greeted by the flex room, you decide how it functions - a formal dining space or children's play area. The kitchen features a large, modern island that opens up to the causal dining area and living room with Fireplace, so the conversation never has to stop! Tucked off the living room is a downstairs bedroom and full bath - the perfect guest suite or home office. Upstairs you'll find a cozy loft, upstairs laundry and three additional bedrooms, including the owner's suite. *Your new home also comes complete with our Smart Home System featuring a Qolsys IQ Panel, Honeywell Z-Wave Thermostat, Amazon Echo Pop, Video doorbell, Eaton Z-Wave Switch and Kwikset Smart Door Lock. Ask about customizing your lighting experience with our Deako Light Switches, compatible with our Smart Home System! **Photos representative of plan only and may vary as built.

PROPERTY DETAILS

ParkingGarage	OtherRooms	InteriorFeatures	AppliancesIncluded
Garage	Living Room	Fireplace- Gas	Range
	Dining Room	Loft	Oven
	Kitchen	Hardwood Flooring	Microwave Oven
	Bedroom	Stainless Steel Appliances	Dishwasher
	Bathroom		
	Laundry		
	Loft		
	Heating	Cooling	
	Gas Natural	Central Air Condition	
water Well	Sewer Septic		



Ask for Margarita Robina
Berger Realty Inc
3160 Asbury Avenue, Ocean City
NJ 08226
Call: 609-399-0076
Email to: mak@bergerrealty.com

