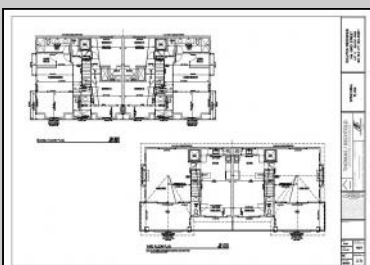
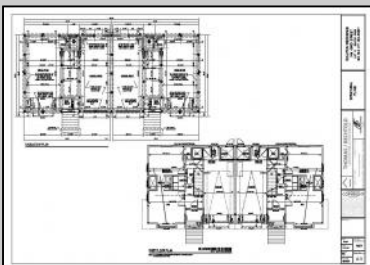
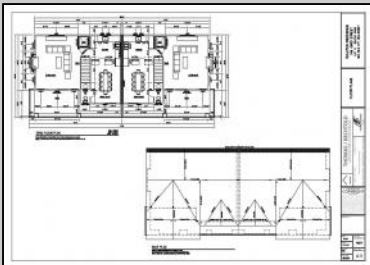
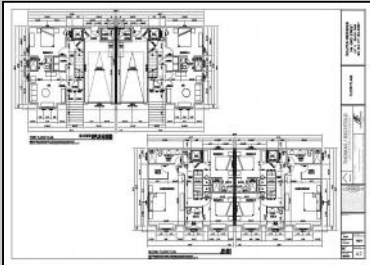




4301 Central
 Sea Isle City, NJ 08243

Asking \$2,199,000.00



COMMENTS

Get in for Summer 2025! Welcome to this fantastic new construction on 43rd street at the corner of 43rd and Central (North Unit). The interior of this home has it all! This house has a unique kitchen layout, with open shelving, and a wet bar. Super spacious, 5 bedrooms 4 1/2 bathrooms, high ceilings, Smart toilet in the master bath, LVT throughout the house, an EV hookup in the garage - this beach home has everything you need to enjoy summers at the Shore. The exterior is wrapped in spectacular Hardie Board siding. Park your car and don't move it! Walk to the beach, promenade, churches, nightlife, restaurants and Fish Alley - all within minutes of your front door. Watch the sunsets from your spacious front deck! Very few new constructions are available. Get in soon and choose some of your finishes. (Architectural Plans are in the Associated Docs along with Spec sheets.)

PROPERTY DETAILS

Heating	Cooling	HotWater	Water
Gas Natural	Central Air	Electric	Public
Forced Air			
Sewer			
Public			



Ask for Patricia (Trish) Spengler
 Berger Realty Inc
 3160 Asbury Avenue, Ocean City
 Call: 609-399-0076
 Email to: pjs@bergerrealty.com

