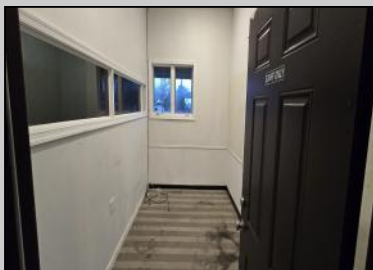


Berger Realty

Since 1928



Berger Realty, Inc.
3160 Asbury Avenue
Ocean City, NJ 08226
1-877-237-4371 / 609-399-0076
info@bergerrealty.com



371 Route 47
Green Creek, NJ 08219

Asking \$3,800.00



COMMENTS

Multi-Use flex property on Rt 47 Middle Township. Desired southbound side of highway gives added visibility and convenience to customers enroute to the shore. This 3200 Sq Ft space is available immediately for a tenant looking for office/warehouse, light manufacturing, storage, or restaurant/satellite kitchen. Ample parking for customers and staff, great signage, 10x10 truck door, high ceilings. Landlord looking for long term tenant. Rent is \$14 per ft +NNN.

PROPERTY DETAILS

Exterior Block	OutsideFeatures Truck Door	ParkingGarage 11 Or More Spaces Paved	OtherRooms Office Space Avail
InteriorFeatures Restroom Storage	Heating Gas Propane Forced Air	Cooling Central Conditioning	HotWater Air Electric
Water Well	Sewer Septic		



Ask for Michael Maina
Berger Realty Inc
3160 Asbury Avenue, Ocean City
Call: 609-399-0076
Email to: mai@bergerrealty.com

