

# Berger Realty

Since 1928

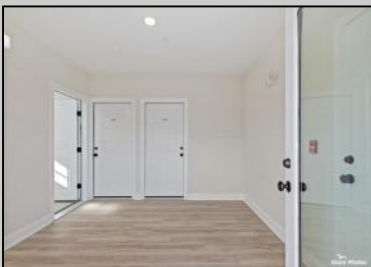


Berger Realty, Inc.  
3160 Asbury Avenue  
Ocean City, NJ 08226  
1-877-237-4371 / 609-399-0076  
info@bergerrealty.com



**3122 Pacific  
Wildwood, NJ 08260**

**Asking \$659,000.00**



## COMMENTS

New Construction First Floor Condominium located near the beach, boardwalk, and all of your favorite dining and entertainment establishments in the Heart of the Wildwoods. Three bedrooms, two baths, spacious living area, private deck, custom kitchen, large primary suite with private bath, central heating and air, private garage, two car parking, pet friendly for owners, located near all of your favorite seashore activities. This community is being redeveloped at a rapid pace so hurry to secure your piece of the Jersey Shore. Photos portray a representation of the property to be viewed as an example of concept and finish work. Projected taxes based on 5- year tax abatement approval.

## PROPERTY DETAILS

Unit Features	Parking Garage	Other Rooms	Appliances Included
Handicap Features	Auto Door Opener	Living Room	Range
Kitchen Island	2 Car	Kitchen	Self-Clean Oven
Hardwood Floors	Concrete Driveway	Dining Area	Microwave Oven
Wall To Wall Carpet		Pantry	Refrigerator
Cathedral Ceiling		Laundry/Utility Room	Dishwasher
		Storage Space	Disposal
			Smoke/Fire Detector

Heating

Cooling  
Central Air

Hot Water  
Gas

Water  
City



Ask for Dawn Warren

Berger Realty Inc  
3160 Asbury Avenue, Ocean City  
Call: 609-399-0076  
Email to: dew@bergerrealty.com

