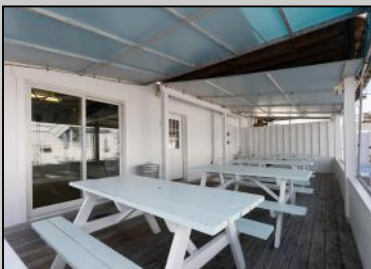




2150 Dune  
Avalon, NJ 08202

Asking \$2,100,000.00



### COMMENTS

Amazing Mixed-Use Investment Opportunity in Avalon's Business District! This unique property offers an exceptional chance to own a mixed-use building in the heart of Avalon's thriving business district. With a commercial restaurant space on the first floor and a spacious four bedroom residence on the second, this property is perfect for investors or those wanting to live in a vibrant community while generating rental income. The first floor features a high-visibility restaurant space ideally situated in Avalon's bustling district. It includes an updated interior and is currently home to one of Avalon's newest and most successful businesses. The commercial unit has a separate entrance from the residential space, providing privacy for both tenants or owners. This space offers a fantastic opportunity for a restaurateur looking to make their mark or for an investor seeking a reliable rental property in a prime location. The upper residential unit boasts a spacious, comfortable layout with four bedrooms and one full bathroom. This versatile unit is perfect for an owner-occupant or as an additional source of rental income. Located in Avalon's vibrant commercial area with strong foot traffic, this property is an incredible investment opportunity with multiple income streams. You could live in the residential unit while renting out the commercial space, or lease both for even greater returns. Please note that the sale is subject to the final condominium conversion process. The sale consists of real estate only. The business and owner's equipment are not included in the sale. Don't miss this rare chance to own a mixed-use gem in Avalon's sought-after business district. Contact us today to schedule a viewing and explore the possibilities this property offers.

### PROPERTY DETAILS

Asking For: \$2,100,000.00	Interior Features	Heating
Parcel Paid	Living Space Available	Gas Natural
109 E 55th St., Ocean City		
Call: 609-399-4261		
Email to: cll@bergerrealty.com		

