

Berger Realty

Since 1928

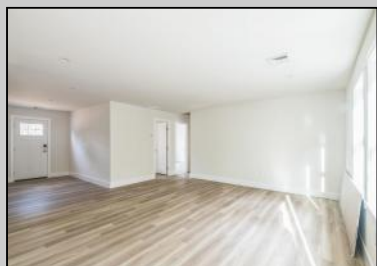


Berger Realty, Inc.
3160 Asbury Avenue
Ocean City, NJ 08226
1-877-237-4371 / 609-399-0076
info@bergerrealty.com



**80 Rising Sun
Ocean View, NJ 08230**

Asking \$625,000.00



COMMENTS

Introducing the Cape Charles model at Rising Sun Row! This contemporary, cape-style home is part of a four-home, single family development by Pelagic Homes. A division of Pelagic Properties, Pelagic Homes is a local builder bringing high quality, affordable homes to market in Cape May County. Your future home is the epitome of coastal modern living in a quiet neighborhood in Ocean View, NJ! With 4 bedrooms and 3 full bathrooms, the Cape Charles model (Flint Gray, White Lineals) has an open layout, large open floor plan & the perfect space for entertaining where the Living Room, Dining Room, and Kitchen flowing seamlessly together. The Kitchen boasts SS appliances, quartz countertops, and abundant cabinet space. The Primary Suite features a luxurious Ensuite Bathroom with dual sinks and a spacious walk-in closet. The 2nd floor is has the spacious 3rd & 4th Bedrooms, and they share the third Bathroom. Outside, a private backyard area backs up to mature lush trees and offers opportunities for outdoor relaxation and entertaining. Located less than 4 miles from downtown Sea Isle City, you're just minutes away from both the bay and the beach! This property presents an exceptional opportunity for those looking for a shore home retreat or year-round Cape May County living. Don't miss out \ schedule a viewing today to experience the charm, features, and location this home has to offer. This home is a quick delivery Modular Home with a delivery date of 2/1/25.

PROPERTY DETAILS

Other Rooms	Interior Features	Appliances Included	Heating
	Vinyl Flooring	Oven	Gas Natural
	Ask for Denise Kelly	Refrigerator	Forced Air
	Berger Realty Inc.	Dishwasher	
	3160 Asbury Avenue, Ocean City	Disposal	
	Call: 609-399-0076	Stove Natural Gas	
	Email to: dlk@bergerrealty.com		
	Gas- Natural	Private Well	

