

15 Dirt
Beesleys Point, NJ 08223

Asking \$799,900.00



COMMENTS

Welcome to your dream retreat! This sprawling single-family home is nestled on over an acre in the tranquil Beesleys Point neighborhood. As you step inside, you're greeted by a spacious open living area featuring beautiful hardwood floors, a cozy stone fireplace, and a charming built-in wood bar, perfect for entertaining family and friends. Enjoy year-round leisure in your very own indoor pool and hot tub, providing endless opportunities for family fun and relaxation. The home boasts a thoughtfully designed layout, including four spacious bedrooms and two full baths on the upper level, complete with decks off two of the bedrooms for your morning coffee or evening wind-down. Additional highlights include a full bath conveniently located in the pool area and a half bath on the first floor, enhancing the home's functionality. The basement features a wine cellar, perfect for the wine enthusiast. Don't miss the chance to make this exquisite property your own.

PROPERTY DETAILS

Exterior Vinyl	OutsideFeatures Patio Deck Fenced Yard Sidewalks In Ground Pool Sprinkler System	ParkingGarage Garage 3 Car Attached Auto Door Opener Concrete Driveway	OtherRooms Living Room Dining Room Kitchen Den/TV Room Eat-In-Kitchen Dining Area Laundry/Utility Room Great Room See Remarks
InteriorFeatures Bar Cathedral Ceilings Fireplace- Gas Wood Flooring Sauna Storage Cedar Closet Kitchen Island	AppliancesIncluded Self-Clean Oven Microwave Oven Refrigerator Washer Dryer Dishwasher Disposal	Basement Full Inside Entrance	Heating Gas Natural Oil Forced Air Hot Water
Cooling Central Air Condition	HotWater Oil	Water City	Sewer Private

Berger Realty

• Since 1928 •



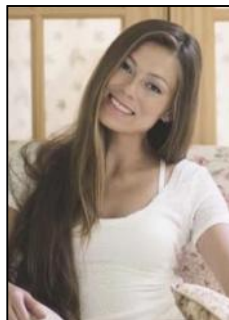
Berger Realty, Inc.
3160 Asbury Avenue
Ocean City, NJ 08226
1-877-237-4371 / 609-399-0076
✉ info@bergerrealty.com



Ceiling Fan
Multi Zoned

Public

Septic



Ask for Margarita Kobilianets
Berger Realty Inc
3160 Asbury Avenue, Ocean City
Call: 609-399-0076
Email to: mak@bergerrealty.com

