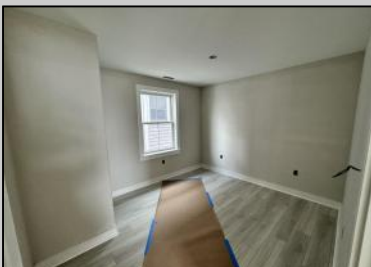


Berger Realty

Since 1920



Berger Realty, Inc.
3160 Asbury Avenue
Ocean City, NJ 08226
1-877-237-4371 / 609-399-0076
info@bergerrealty.com



4420 Park
Sea Isle City, NJ 08243

Asking \$2,300,000.00



COMMENTS

Coming soon!! Bay Front New Construction! Now is your opportunity to own a brand-new townhouse on Park Road in Sea Isle City. With 4 beds and 3.5 baths, this home is perfect for the whole family. Built by Sea Isle's own Michael O'Neill, you won't want to miss this one! The property includes an elevator, private decks on all 3 floors, attached 2-car garage, new bulkhead and a boat slip. The bay front unit has great water views and is within walking distance to local restaurants, shops, the promenade and beaches.

PROPERTY DETAILS

Unit Features	Parking/Garage	Other Rooms	Appliances Included
Kitchen Island	Garage	Dining Area	Self-Clean Oven
Walk-In/Cedar Closet	2 Car	Great Room	Microwave Oven
Elevator	Concrete Driveway		Refrigerator
			Washer
			Dryer
			Dishwasher
			Disposal
Heating	Cooling	Hot Water	Water
Gas Natural	Central Air	Gas	City
Forced Air	Ceiling Fan		



Ask for Steven Orner
Berger Realty Inc
3160 Asbury Avenue, Ocean City
Call: 609-399-0076
Email to: slo@bergerrealty.com

