

Berger Realty

Since 1928



Berger Realty, Inc.
3160 Asbury Avenue
Ocean City, NJ 08226
1-877-237-4371 / 609-399-0076
info@bergerrealty.com



**99 Mays Landing
Somers Point, NJ 08244**

Asking \$325,000.00



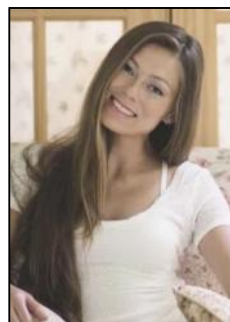
COMMENTS

Good opportunity with this former oil distribution facility located near the Garden State Parkway. This 130 X 116 property consists of 3 Oil Tanks (two 25,000-gallon tanks in service and one 65,000-gallon tank not in service), an oil loading deck, and a 2-door 780 s.f. garage. Garage dimensions are as follows: (garage doors measure 10' W X 12' H). (garage measures 26' W X 30' L (780 s.f.) with 14' ceiling). Located in the flexible HC-1 Zone (Highway Commercial-One District).

PROPERTY DETAILS

OutsideFeatures	Heating	Cooling	Water
Sign	No Heating	Wall Air Conditioning	Public
Fence			

Sewer
Public



Ask for Margarita Kobilianets
Berger Realty Inc
3160 Asbury Avenue, Ocean City
Call: 609-399-0076
Email to: mak@bergerrealty.com

