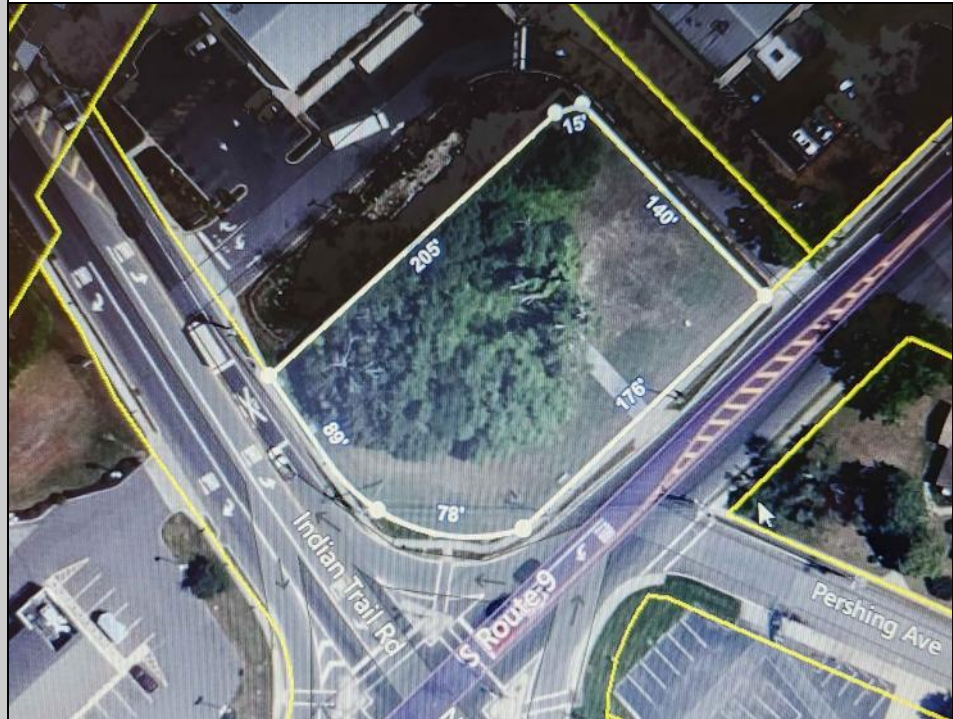




1263 Route 9 S  
Cape May Court House, NJ 08210

Asking \$299,900.00



#### COMMENTS

Prime location with this 0.72-acre Commercial Lot located on Route 9. The new Grapevine Plaza development across the street on Rt. 9. Home Depot is just around the corner in this thriving business sector. Flexible Town Business Zone allows for a variety of business opportunities including Retail, Restaurants, Professional Offices, Mixed-Use, Health Care etc. Priced to sell well below assessed value.

#### PROPERTY DETAILS



Ask for John Lazzara  
Berger Realty Inc  
3160 Asbury Avenue, Ocean City  
Call: 609-399-0076  
Email to: jol@bergerrealty.com

