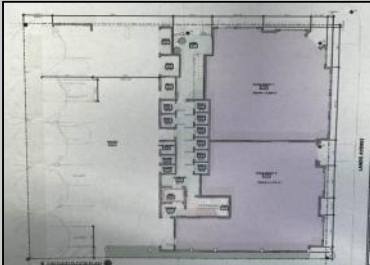




4 PERSPECTIVE - 60TH STREET



6000 Landis
Sea Isle City, NJ 08243

Asking \$3,499,900.00

3 PERSPECTIVE - LANDIS AVENUE
6" = 1'-0"



COMMENTS

****Exciting Development Opportunity Now Available! **** Don't miss this exceptional chance to invest in a prime real estate project! This proposed building features eight thoughtfully designed residential units, including four elegant townhouses and four stylish flat-style condominiums, each boasting four spacious bedrooms and two full baths. The building is crafted by esteemed architect William McLees, celebrated for his innovative designs and architectural excellence. Additionally, the property includes two expansive commercial spaces of 2,000 square feet each on the ground floor, perfect for a variety of business ventures. Located on a highly visible corner in Sea Isle City, this site offers excellent exposure and accessibility. Currently, the property operates as a real estate office. Existing lot size in 100 x 110. Opportunities like this are truly rare in Sea Isle City, making it an attractive prospect for both buyers and developers. Seize this chance to invest in a vibrant community! Proposed plans are in stages of building approvals with the municipality. Owner will provide final plans and approvals once completed.

PROPERTY DETAILS

| | | | |
|---------------------|-----------------------|-------------------|--------------------|
| Exterior | Outside Features | Parking Garage | Other Rooms |
| Other (See Remarks) | Storage Building | 11 Or More Spaces | Office Space Avail |
| | Sign | Off Street | Laundry Room |
| | Security Light/System | | Utility Room |
| | | | Shower Room(s) |



Heating Gas
Cooling Central
Air Conditioning Multi-Zoned
Sewer City
Call: 609-399-4211
Email to: ieb@bergerrealty.com

Hot Water Air Gas

