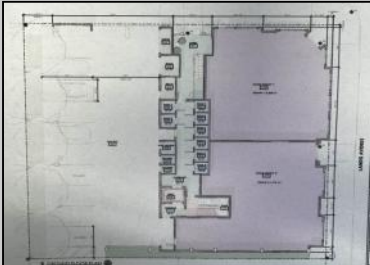




4 PERSPECTIVE - 60TH STREET



6000 Landis
Sea Isle City, NJ 08243

Asking \$3,499,900.00

3 PERSPECTIVE - LANDIS AVENUE
6" = 1'-0"



COMMENTS

****Exciting Development Opportunity Now Available! **** Don't miss this exceptional chance to invest in a prime real estate project! This proposed building features eight thoughtfully designed residential units, including four elegant townhouses and four stylish flat-style condominiums, each boasting four spacious bedrooms and two full baths. The building is crafted by esteemed architect William McLees, celebrated for his innovative designs and architectural excellence. Additionally, the property includes two expansive commercial spaces of 2,000 square feet each on the ground floor, perfect for a variety of business ventures. Located on a highly visible corner in Sea Isle City, this site offers excellent exposure and accessibility. Currently, the property operates as a real estate office. Existing lot size in 100 x 110. Opportunities like this are truly rare in Sea Isle City, making it an attractive prospect for both buyers and developers. Seize this chance to invest in a vibrant community! Proposed plans are in stages of building approvals with the municipality. Owner will provide final plans and approvals once completed.

PROPERTY DETAILS

Exterior	OutsideFeatures	ParkingGarage	OtherRooms
Other (See Remarks)	Storage Building	11 Or More Spaces	Office Space Avail
	Sign	Off Street	Laundry Room
	Security Light/System		Utility Room
			Shower Room(s)



Heating Gas
Cooling Central
Air Conditioning Multi-Zoned
Sewer City

Asker: Bob Wilkins
Berger Realty Inc
109 E 55th St., Ocean City
Call: 609-399-4211
Email to: bw@bergerrealty.com

HotWater Air Gas

