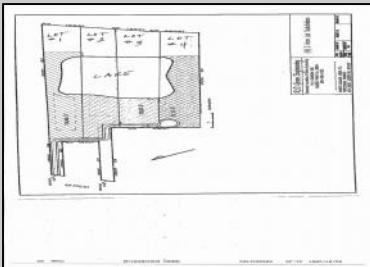
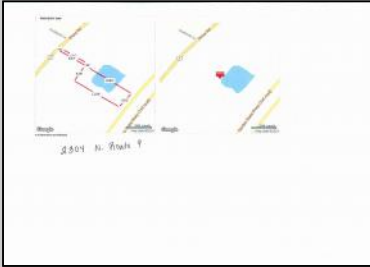


Berger Realty

Since 1928



Berger Realty, Inc
1330 Bay Avenue
Ocean City, NJ 08226
609-391-1330/609-391-1300
info@bergerrealty.com



**2304 Route 9
Ocean View, NJ 08210**

Asking \$899,900.00



COMMENTS

Potential Development Opportunity! Two Adjacent Lots Available in Dennis Twp. 2304 and 2316 N. Route 9, approximately 21 acres with a pond on the property. Within a few miles of Avalon, Sea Isle and Stone Harbor. All approvals, inspections and applications needed are the responsibility of the buyer.

PROPERTY DETAILS



Ask for Faith Camp-ODonnell
Berger Realty Inc
1330 Bay Avenue, Ocean City
Call: 609-391-1330
Email to: fco@bergerrealty.com

