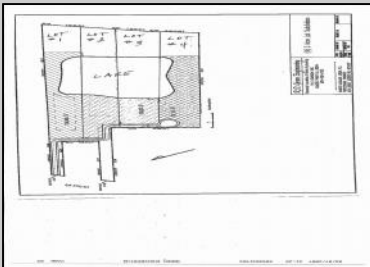
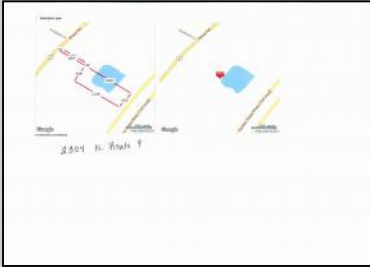




2304 Route 9  
Ocean View, NJ 08210

Asking \$899,900.00



### COMMENTS

Potential Development Opportunity! Two Adjacent Lots Available in Dennis Twp. 2304 and 2316 N. Route 9, approximately 21 acres with a pond on the property. Within a few miles of Avalon, Sea Isle and Stone Harbor. All approvals, inspections and applications needed are the responsibility of the buyer.

### PROPERTY DETAILS



Ask for David Young  
Berger Realty Inc  
1670 Boardwalk, Ocean City  
Call: 609-391-0500  
Email to: [day@bergerrealty.com](mailto:day@bergerrealty.com)

