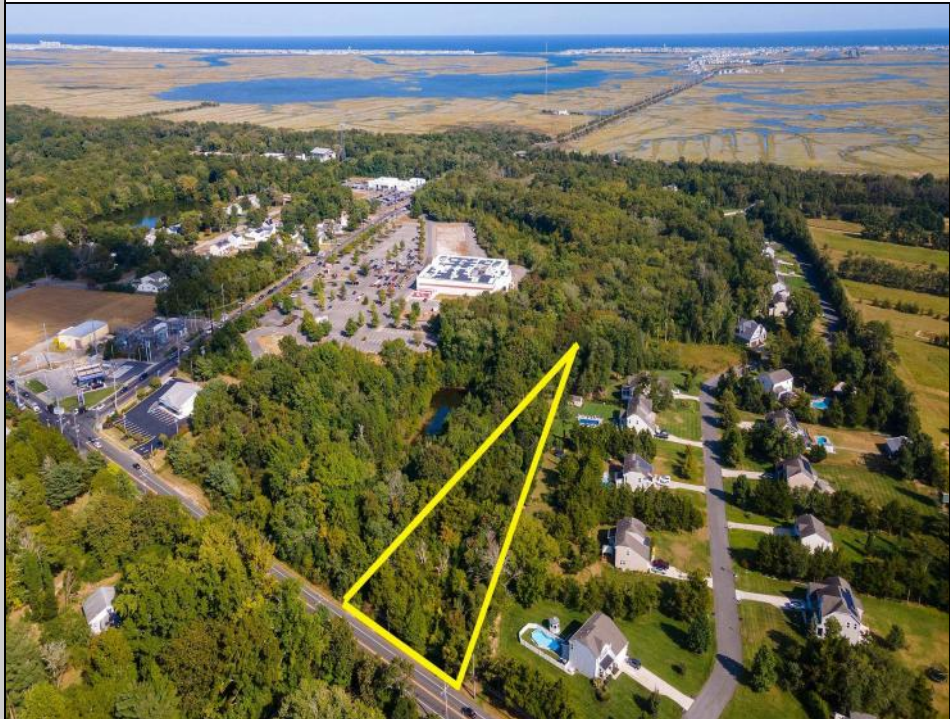




1568 Route 9 N  
Cape May Court House, NJ 08210

Asking \$249,000.00



#### COMMENTS

Large lot just over one acre and minutes to Avalon's Beaches! Located a few hundred feet from Avalon Boulevard this amazing location is ideal for anyone looking to build their dream home. Village Commercial Zoning will allow for a single family home with a small business. Lot dimensions in aerial photos are estimates based on tax map. Don't miss this incredible opportunity!

#### PROPERTY DETAILS



Ask for David Young  
Berger Realty Inc  
1670 Boardwalk, Ocean City  
Call: 609-391-0500  
Email to: [day@bergerrealty.com](mailto:day@bergerrealty.com)

