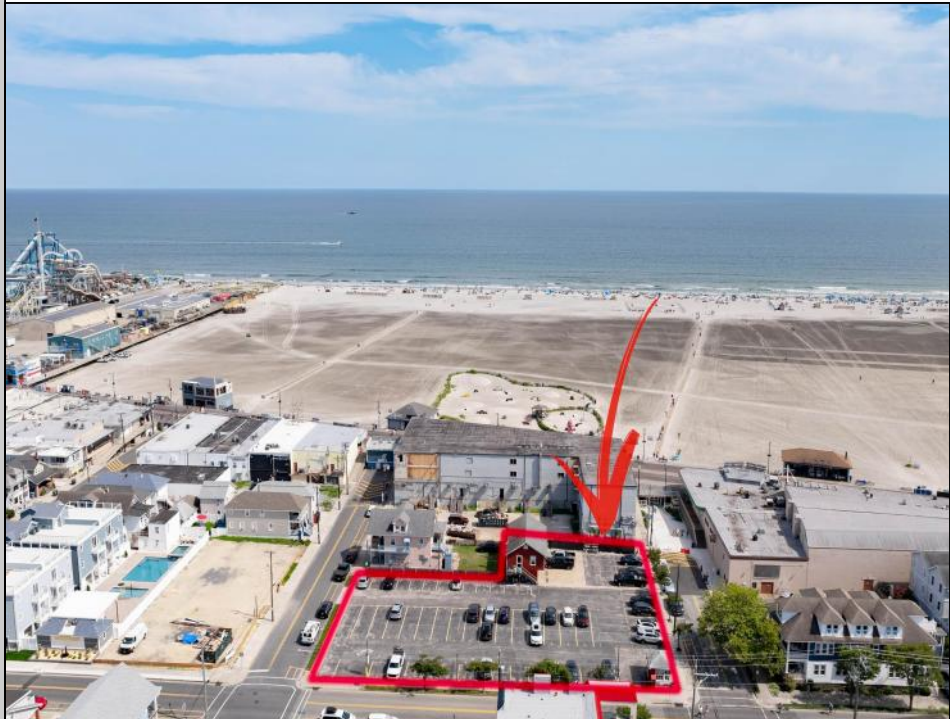




**401 Maple
 Wildwood, NJ 08260**

Asking \$3,999,999.00



COMMENTS

Location! Location! Location! Wildwood, NJ has been a yearly vacation destination for hundreds of thousands of people for generations! 401 East Maple Avenue is within steps to the newly finished boardwalk and has a new street end and new beach entrance. Ocean Avenue frontage is approximately 180 feet. Close to the dog park! It is an Opportunity Zone/TE Zone (Wildwood Tourism Entertainment Zone). The property is currently used as a parking lot with 2 apartments and a large garage. Steps to the beautiful, free Wildwood Beaches. Maple Avenue Beach is one of the largest/widest beaches in Wildwood! The possibilities are endless! This location is ripe for development and is right in the heart of all The Wildwoods has to offer including award winning restaurants, gift shops, amusement piers, water parks and so much more!

PROPERTY DETAILS

Heating	Cooling	Water	Sewer
Electric	Electric	City	City



Ask for Tanya Pinkerton
 Berger Realty Inc
 3160 Asbury Avenue, Ocean City
 Call: 609-399-0076
 Email to: tp@bergerrealty.com

