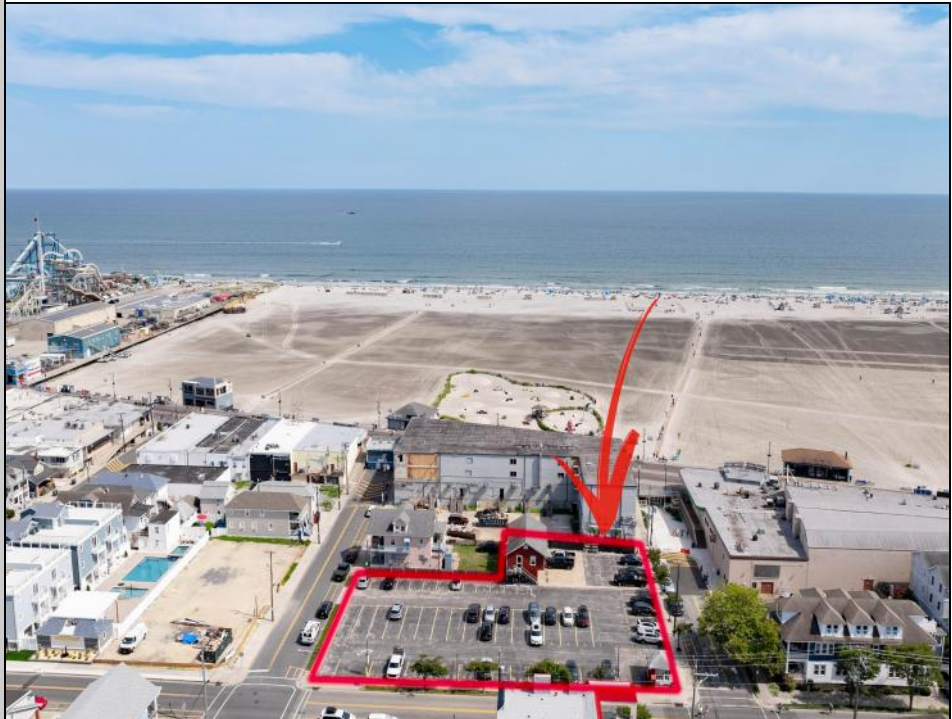




**401 Maple**  
**Wildwood, NJ 08260**

**Asking \$3,999,999.00**



**COMMENTS**

Location! Location! Location! Wildwood, NJ has been a yearly vacation destination for hundreds of thousands of people for generations! 401 East Maple Avenue is within steps to the newly finished boardwalk and has a new street end and new beach entrance. Ocean Avenue frontage is approximately 180 feet. Close to the dog park! It is an Opportunity Zone/TE Zone (Wildwood Tourism Entertainment Zone). The property is currently used as a parking lot with 2 apartments and a large garage. Steps to the beautiful, free Wildwood Beaches. Maple Avenue Beach is one of the largest/widest beaches in Wildwood! The possibilities are endless! This location is ripe for development and is right in the heart of all The Wildwoods has to offer including award winning restaurants, gift shops, amusement piers, water parks and so much more!

**PROPERTY DETAILS**

Heating	Cooling	Water	Sewer
Electric	Electric	City	City



Ask for Lori McCloskey  
Berger Realty Inc  
109 E 55th St., Ocean City  
Call: 609-399-4211  
Email to: lam@bergerrealty.com

