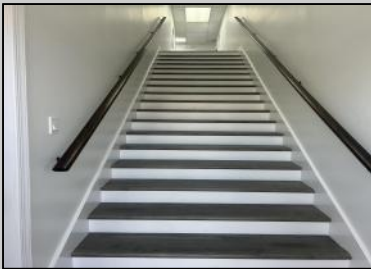




5803 New Jersey
 Wildwood Crest, NJ 08260

Asking \$1,200.00



COMMENTS

Commercial Rental Opportunity in Wildwood Crest Available for lease. 750 sq ft second-floor commercial unit located in the Business District area of Wildwood Crest. This versatile space is perfect for various professions business needs. Key Features: • Size: 750 sq. ft. • Location: Second floor • Parking: Two unassigned parking spots • Utilities: Gas and electric included (paid by tenant) • Water and Sewer: Included (paid by owner) • Maintenance: Tenant responsible for 12.5% of all building maintenance costs. This is an excellent opportunity to establish your business in a bustling community. Contact your Agent today for more details and to schedule a viewing! Available for a single year or multi year lease. Both available units can be leased and merged into one (1,500 sq ft). Rent for both would be \$2,200 a month

PROPERTY DETAILS

Heating	Cooling	Water	Sewer
Gas Natural	Electric	City	City



Ask for Domenic Ballerini
 Berger Realty Inc
 3160 Asbury Avenue, Ocean City
 Call: 609-399-0076
 Email to: dvb@bergerrealty.com

