

# Berger Realty

Since 1928



Berger Realty, Inc.  
3160 Asbury Avenue  
Ocean City, NJ 08226  
1-877-237-4371 / 609-399-0076  
info@bergerrealty.com

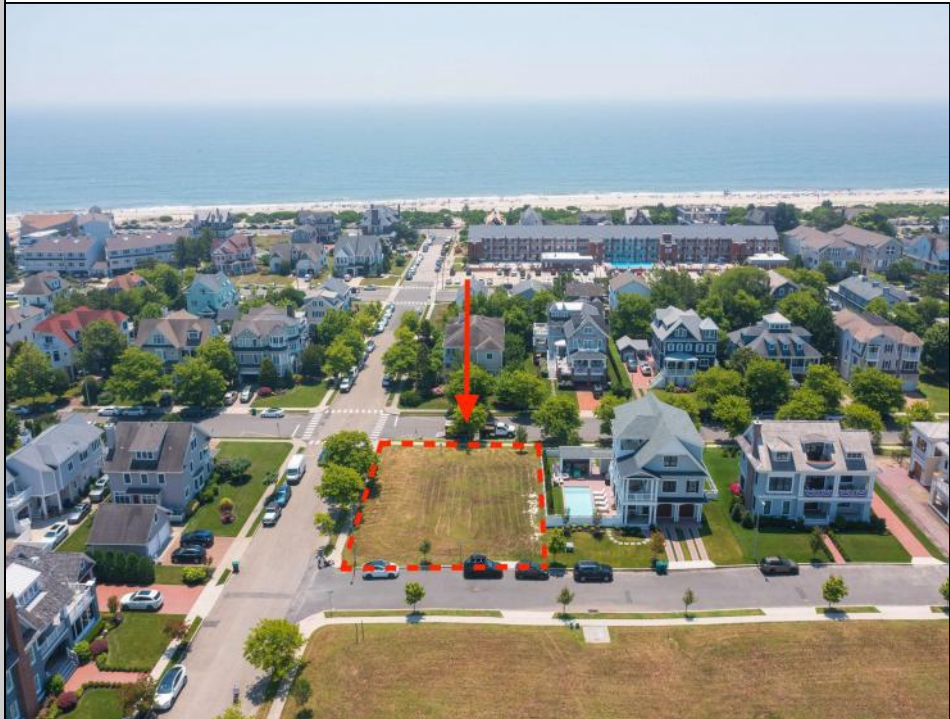


Potential Ocean Views From Approximately 35 Feet



1514 Velvento  
Cape May, NJ 08204

Asking \$2,575,000.00



### COMMENTS

Prime corner residential lot in the prestigious Poverty Beach section of Cape May...Corner lot just 2 blocks to the beach with potential water views...Lot is 89' x 113'...City water and sewer, curbs, electric, cable, and gas

### PROPERTY DETAILS



Ask for George Cash  
Berger Realty Inc  
3160 Asbury Avenue, Ocean City  
Call: 609-399-0076  
Email to: gbc@bergerrealty.com

