

Berger Realty

Since 1920



Berger Realty, Inc.
3160 Asbury Avenue
Ocean City, NJ 08226
1-877-237-4371 / 609-399-0076
✉ info@bergerrealty.com

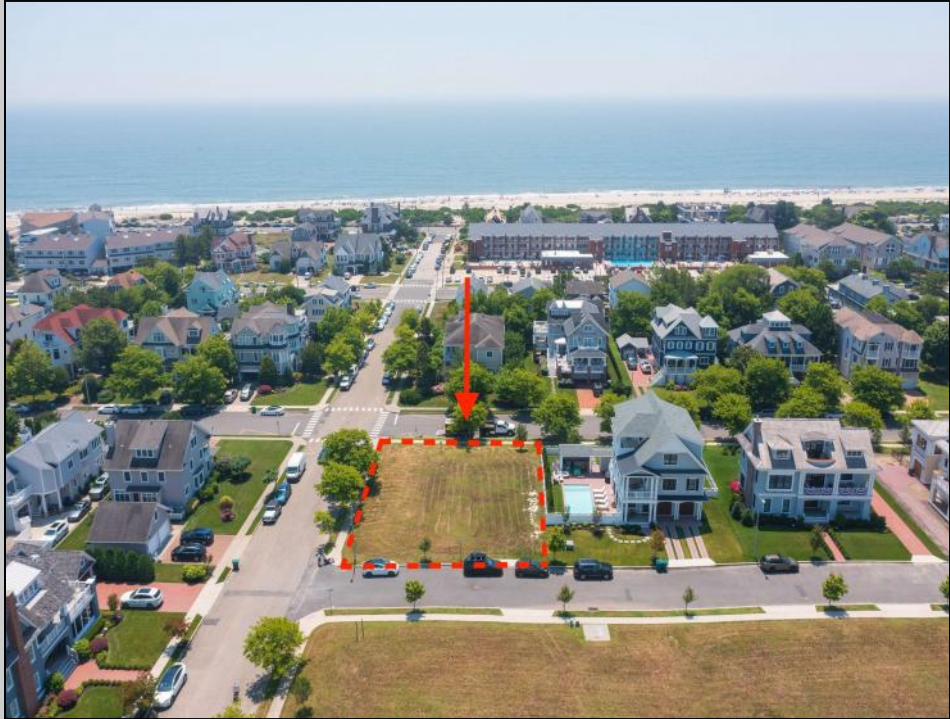


Potential Ocean Views From Approximately 35 Feet



**1514 Velvento
Cape May, NJ 08204**

Asking \$2,575,000.00



COMMENTS

Prime corner residential lot in the prestigious Poverty Beach section of Cape May...Corner lot just 2 blocks to the beach with potential water views...Lot is 89' x 113'...City water and sewer, curbs, electric, cable, and gas

PROPERTY DETAILS



Ask for Dale Collins
Berger Realty Inc
3160 Asbury Avenue, Ocean City
Call: 609-399-0076
Email to: djc@bergerrealty.com
<http://www.BADERCOLLINS.com>

